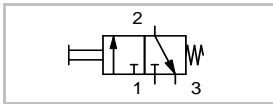


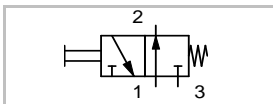
**PNEUMATIC EQUIPMENTS**

- 1** **FP-32BNK**  
3/2 WAY VALVE PUSH BUTTON - NC



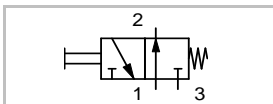
- Spool valve with spring return
- operating pressure 0-10 bar
- 280 lt/min flow rate
- actuation force 16 N

- 2** **FP-32BNA**  
3/2 WAY VALVE PUSH BUTTON - NO



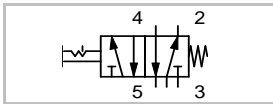
- Spool valve with spring return
- operating pressure 0-10 bar
- 280 lt/min flow rate
- actuation force 16 N

- 3** **FP-32CNA**  
3/2 WAY VALVE SELECTOR SWITCH- NO



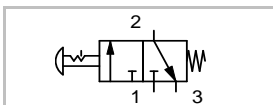
- Spool valve with spring return
- operating pressure 0-10 bar
- 280 lt/min flow rate
- actuation force 16 N

- 4** **FP-52C**  
5/2 WAY VALVE SELECTOR SWITCH



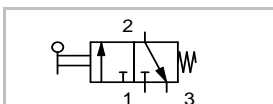
- Spool valve with spring return
- operating pressure 0-10 bar
- 280 lt/min flow rate
- actuation force 16 N

- 5** **FP-32ACL**  
3/2 WAY EMERGENCY STOP VALVE-NO



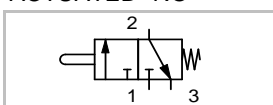
- Spool valve with spring return
- operating pressure 0-10 bar
- 280 lt/min flow rate
- actuation force 27 N

- 6** **FP-32MNK**  
3/2 WAY VALVE LEVER SWITCH- NO



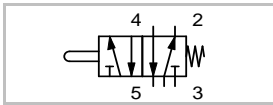
- Spool valve with spring return
- operating pressure 0-10 bar
- 280 lt/min flow rate
- actuation force 16 N

- 7** **FP-32PNK**  
3/2 WAY VALVE MECH. ACTUATED- NO



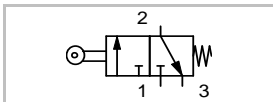
- Spool valve with spring return
- operating pressure 0-10 bar
- 280 lt/min flow rate
- actuation force 16 N

8) **FP-52PNK**  
5/2 WAY VALVE MECHANICALLY ACTUATED



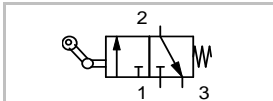
- Spool valve with spring return
- operating pressure 0-10 bar
- 280 lt/min flow rate
- actuation force 16 N

9) **FP-32TNK**  
3/2 WAY ROLLER LEVER VALVE - NC



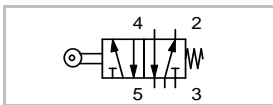
- Spool valve with spring return
- operating pressure 0-10 bar
- 280 lt/min flow rate
- actuation force 10 N

10) **FP-32MTNK**  
3/2 WAY ROLLER LEVER VALVE SINGLE SIDE ACTUATED - NC



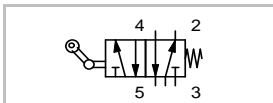
- Spool valve with spring return
- operating pressure 0-10 bar
- 280 lt/min flow rate
- actuation force 10 N

11) **FP-52TNK**  
5/2 WAY ROLLER LEVER VALVE



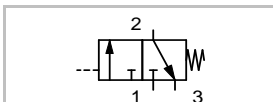
- Spool valve with spring return
- operating pressure 0-10 bar
- 280 lt/min flow rate
- actuation force 16 N

12) **FP-52MTNK**  
5/2 WAY ROLLER LEVER VALVE SINGLE SIDE ACTUATED



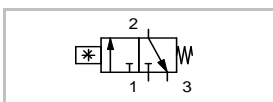
- Spool valve with spring return
- operating pressure 0-10 bar
- 280 lt/min flow rate
- actuation force 16 N

13) **FP- 32HYNK**  
3/2 WAY SINGLE ACTING PNEUMATIC VALVE NC



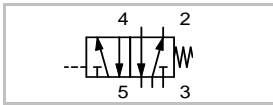
- Spool valve with spring return
- operating pressure 2-10 bar
- 650 lt/min flow rate

14) **FP- 32MYNK**  
3/2 WAY PNEUMATIC PROXIMITY VALVE - NC



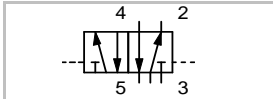
- spring return
- operating pressure 2-10 bar
- 150 lt/min flow rate

- 15) **FP-52HY**  
5/2 WAY SINGLE ACTING  
PNEUMATIC VALVE



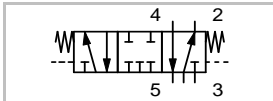
- Spool valve with spring return
- operating pressure 2-10 bar
- 650 lt/min flow rate

- 16) **FP-52HH**  
5/2 WAY DOUBLE ACTING  
PNEUMATIC VALVE



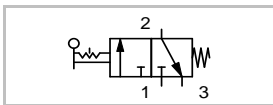
- Spool valve operating pressure 2-10 bar
- 650 lt/min flow rate

- 17) **FP-53HHK**  
5/3 WAY MID POSITION CLOSED  
VALVE



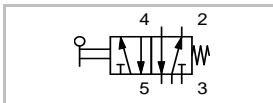
- Spool valve with spring return to mid position
- operating pressure 2-10 bar
- 650 lt/min flow rate
- strok 200mm

- 18) **FP-32KNK**  
3/2 WAY HAND OPERATED SLIDE  
VALVE-NC



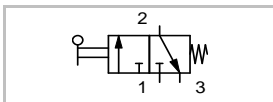
- Hand operated slide (circuit on/off ) valve
- operating pressure 0-10 bar
- 400 lt/min flow rate

- 19) **FP-52K**  
5/2 WAY HAND LEVER SPRING  
RETURN VALVE



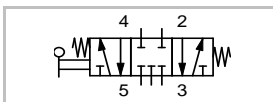
- Spool valve with spring return
- operating pressure 1-10 bar
- 650 lt/min flow rate

- 20) **FP-32KNA**  
3/2 WAY HAND LEVER SPRING  
RETURN VALVE-NO



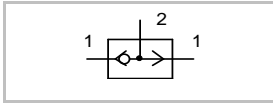
- Spool valve with spring return
- operating pressure 1-10 bar
- 650 lt/min flow rate

- 21) **FP-53KKM**  
5/3 WAY HAND LEVER VALVE  
MID POS. CLOSED

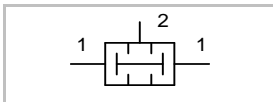


- Spool valve with spring return
- operating pressure 1-10 bar
- 650 lt/min flow rate

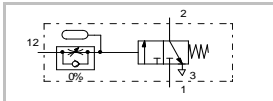
- 22) FP-VYV**  
OR VALVE
- Logic valve
  - operating pressure 1-10 bar
  - flow rate 280 lt/min



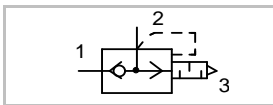
- 23) FP-VEV**  
AND VALVE
- Logic valve
  - operating pressure 1-10 bar
  - flow rate 280 lt/min



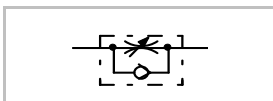
- 24) FP-33ZGV**  
3/2 TIME DELAY VALVE - NO / NC
- 0-30 sec timer valve
  - operating pressure 2-5-8 bar
  - flow rate 100 lt/min
  - NO/NC



- 25) FP-CBV**  
QUICK EXHAUST VALVE
- 5-12 bar
  - 500 lt/min flow rate



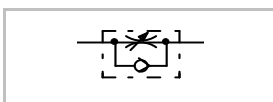
- 26) FP-TYK**  
ONE WAY FLOW CONTROL VALVE
- for cylinder use
  - 4mm fittings
  - 340 lt/min flow rate

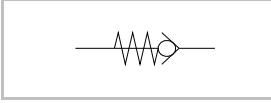

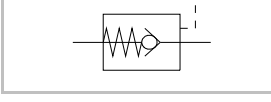

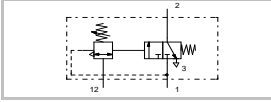

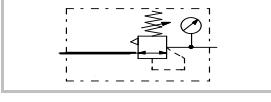

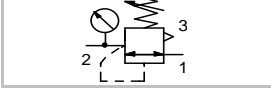

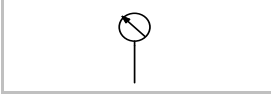

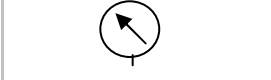



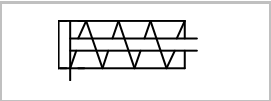

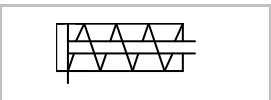

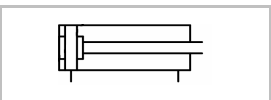

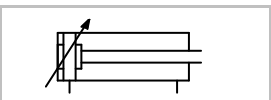

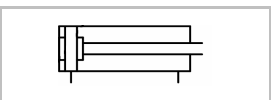

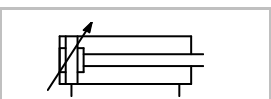

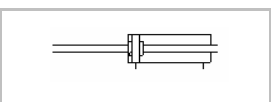

- 27) FP-CYK**  
TWO WAY FLOW CONTROL VALVE
- INLINE TYPE
  - operating pressure 0-5-10 bar
  - flow rate 450 lt/min



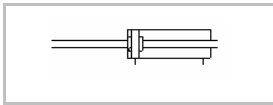
- 28) FP-TYKH**  
ONE WAY FLOW CONTROL VALVE
- 350 lt/min flow rate
  - 0-10 bar



<p><b>29) FP-CV</b> NON RETURN VALVE</p> 		<ul style="list-style-type: none"> <li>● 900 lt/min flow rate</li> <li>● 2-10 bar</li> </ul>
<p><b>30) FP-CVP</b> NON RETURN VALVE WITH PILOT OPEN</p> 		<ul style="list-style-type: none"> <li>● 250 lt/min flow rate</li> <li>● 5-10 bar</li> </ul>
<p><b>31) FP-32BSV</b> 3/2 PRESSURE SEQUENCE VALVE</p> 		<ul style="list-style-type: none"> <li>● 700 lt/min flow rate</li> <li>● 5-12 bar</li> </ul>
<p><b>32) FP-FR</b> FILTER REGULATOR UNIT</p> 		<ul style="list-style-type: none"> <li>● Filter regulator unit with manometer</li> <li>● operating pressure 0-12 bar</li> <li>● 600 lt/min flow rate</li> </ul>
<p><b>33) FP-RGL</b> PRESSURE REGULATOR</p> 		<ul style="list-style-type: none"> <li>● Pressure regulator with manometer</li> <li>● operating pressure 0-12 bar</li> <li>● 600 lt/min flow rate</li> </ul>
<p><b>34) FP-32ACL</b> MANOMETER IN LINE</p> 		<ul style="list-style-type: none"> <li>● Pressure manometer</li> <li>● 0-12 bar</li> </ul>
<p><b>35) FP-32MNK</b> MANOMETER</p> 		<ul style="list-style-type: none"> <li>● Pressure manometer</li> <li>● 0-12 bar</li> </ul>

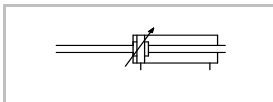
<p><b>36) FP-32PNK</b> SINGLE ACTING CYLINDER</p> 		<ul style="list-style-type: none"> <li>● Return with spring</li> <li>● max. operating pressure 10 bar</li> <li>● with control cam</li> <li>● 20-50 mm</li> </ul>
<p><b>37) FP-52PNK</b> SINGLE ACTING CYLINDER WITH MAGNET</p> 		<ul style="list-style-type: none"> <li>● Return with spring</li> <li>● max. operating pressure 10 bar</li> <li>● with control cam</li> <li>● 20-50 mm</li> </ul>
<p><b>38) FP-32TNK</b> DOUBLE ACTING CYLINDER</p> 		<ul style="list-style-type: none"> <li>● Max. operating pressure 10 bar</li> <li>● with control cam</li> <li>● 20-50 mm</li> </ul>
<p><b>39) FP-32MTNK</b> DOUBLE ACTING CYLINDER WITH MAGNET AND CUSHION.</p> 		<ul style="list-style-type: none"> <li>● Max. operating pressure 10 bar</li> <li>● with control cam</li> <li>● 20-50 mm</li> </ul>
<p><b>40) FP-52TNK</b> DOUBLE ACTING CYLINDER WITH MAGNET</p> 		<ul style="list-style-type: none"> <li>● Max. operating pressure 10 bar</li> <li>● with control cam</li> <li>● 20-100 mm</li> </ul>
<p><b>41) FP-52MTNK</b> DOUBLE ACTING CYLINDER WITH MAGNET AND CUSHION.</p> 		<ul style="list-style-type: none"> <li>● Max. operating pressure 10 bar</li> <li>● with control cam</li> <li>● 20-100 mm</li> </ul>
<p><b>42) FP- 32HYNK</b> DOUBLE ACTING THROUGH - ROD CYLINDER</p> 		<ul style="list-style-type: none"> <li>● Max. operating pressure 10 bar</li> <li>● with control cam</li> <li>● 20-100 mm</li> </ul>

**43) FP- 32MYNK**  
 DOUBLE ACTING THROUGH -  
 ROD CYLINDER WITH MAGNET



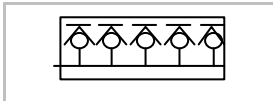
- Max. operating pressure 10 bar
- with control cam
- 20-100 mm

**44) FP-52HY**  
 DA THROUGH -ROD CYLINDER  
 WITH MAGNET AND CUSHION.



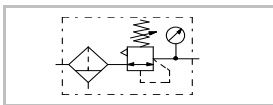
- Max. operating pressure 10 bar
- with control cam
- 20-100 mm

**45) FP-52HH**  
 AIR DISTRIBUTION BLOCK



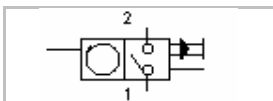
- 8 terminal
- self closing fittings
- max operating pressure 10 bar

**46) FP-53HHK**  
 FILTER REGULATOR  
 LUBRICATOR UNIT



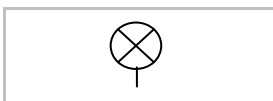
- 0-12 bar
- flow rate 260 lt/min

**47) FP-32KNK**  
 PNEUMATIC COUNTER



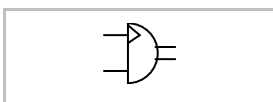
- 2-8 bar
- counting pneumatic signals

**48) FP-52K**  
 PNEUMATIC LAMP



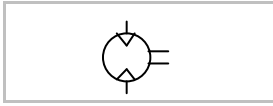
- Pressure indicator with spring return
- operating pressure 2-10 bar

**49) FP-32KNA**  
 ROTARY CYLINDER SWIVELING



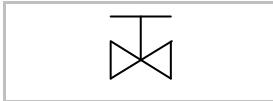
- 2-8 bar
- 0-180 degree adjustable

**50** **FP-53KKM**  
PNEUMATIC MOTOR



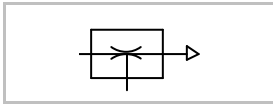
- rotation per minute is 3.000 rpm
- tork 0.4Nm.

**51** **FP-VYV**  
2/2 WAY ON/OFF VALVE



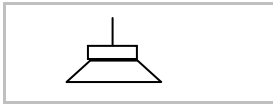
- 2/2 way hand operated On/Off valve
- operating pressure 0-12 bar
- 250 lt/min flow rate

**52** **FP-VEV**  
VAKUM GENERATOR



- 5-10 bar
- vacuum generating with venturi principle

**53** **FP-33ZGV**  
SUCTION CUP



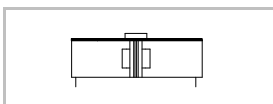
- NBR

**54** **FP-CBV**  
POLYURETHANE HOSE



- 4mm outer diameter polyurethane

**55** **FP-TYK**  
RODLESS CYLINDER 25\*100



- with both end cushioning and magnet

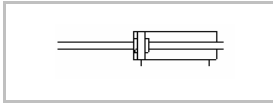
**56** **FP-CYK**  
ALUMINIUM "T" SLOTTED PLATE



- 1.000mm x 700mm
- Anodised Aluminium
- T slotted, for standart M8 nut



**57) FP-TYKH**  
TRANSPARENT PNEUMATIC CYLINDER



- through rod transparent cylinder
- 20\*100mm
- with control cam

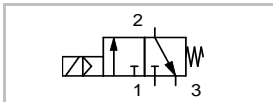
**58) FP-TR**  
T BRANCH, QUICK PUSH-IN FITTINGS



- operating pressure 0-10 bar
- 4mm outer hose diameter

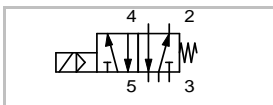
**ELECTROPNEUMATIC EQUIPMENTS**

**59) FP- 32SYNK**  
3/2 WAY SINGLE ACTING SOLENOID VALVE NC



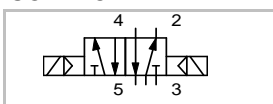
- Solenoid valve with spring return and manual override
- operating pressure 2-10 bar
- 650 lt/min flow rate

**60) FP-52SY**  
5/2 WAY SINGLE ACTING SOLENOID VALVE



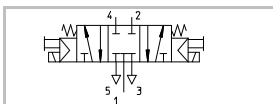
- Solenoid valve with spring return and manual override
- operating pressure 2-10 bar
- 650 lt/min flow rate

**61) FP-52SS**  
5/2 WAY DOUBLE ACTING SOLENOID VALVE



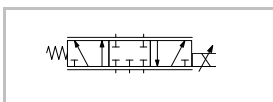
- Solenoid valve with spring return and manual override
- operating pressure 2-10 bar
- 650 lt/min flow rate

**62) FP-53SSK**  
5/3 WAY MID POSITION CLOSED SOLENOID VALVE



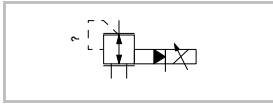
- Solenoid valve with spring return and manual override
- operating pressure 3-10 bar
- 450 lt/min flow rate

**63) FP-53SOV1**  
5/3 WAY PROPORTIONAL VALVE



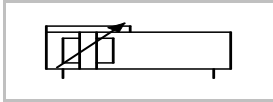
- directly actuated spool valve
- 0-10 VDC
- 0-10 bar
- 600 lt/min flow rate

**64) FP-ORG1**  
**PROPORTIONAL REGULATOR**



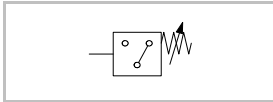
- 0-10 VDC
- 0-8 bar adjustable with analog signal

**65) FP-MSMC**  
**RODLESS CYLINDER WITH POSITION TRANSDUCER**



- 25\*200mm
- 2-8 bar

**66) FP-BS**  
**PNEUMATIC ELECTRIC CONVERTER**



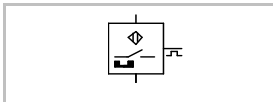
- with changeover contact
- 0-8 bar

**67) FP-DBA**  
**DIGITAL PRESSURE TRANSDUCER WITH LCD**



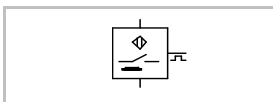
- operating pressure 0-10 bar
- 2 digital output
- 0-5 VDC Output

**68) FP-PRXS**  
**PROXIMITY SENSOR FOR CYLINDER USE**



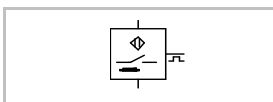
- 10-30 VDC proximity sensor for cylinder use

**69) FE-IS**  
**INDUCTIVE SENSOR**



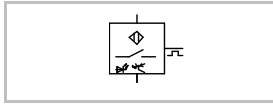
- diameter M18, 24 VDC
- 4mm sensing distance
- metal detecting sensor

**70) FE-KS**  
**CAPASITIVE SENSOR**



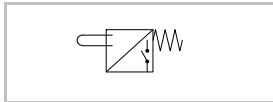
- diameter M18, 24 VDC
- 8mm sensing distance

**71 FE-OS**  
OPTICAL SENSOR



- diameter M18, 24 VDC
- 50 mm sensing distance
- diffuse type
- potentiometer distance adjusting

**72 FE-MSA**  
ELECTRICAL LIMIT SWITCH  
BOTH SIDE ACTUATED



- mechanically actuated
- roller lever electrical switch
- both side actuation
- inverse contact

**73 FE-KABS**  
CABLE SET



- different colour cable set
- isolated banana jacks
- 1,0m x 4 unit
- 0,50m x 8 unit
- 0,20m x 8 unit

**74 FE-KA**  
CABLE HOLDER



- to hold electric cables

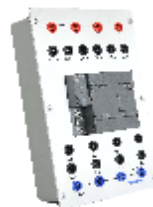
**CONTROL MODULS**

**75 FE-GK**  
POWER SUPPLY



- supply voltage 220 VAC, 50/60 Hz
- switch off power supply
- 24 VDC, 2A, short circuit proof
- buzzer, led, emergency stop

**76 FE-PL222**  
SIEMENS PLC



- Siemens S7-200, 222 PLC
- 8 digital input, 6 digital output

**77 FE-PL224**  
SIEMENS PLC



- Siemens S7-200, 224 xp PLC
- 14 digital input, 10 digital output
- 2 analog input, 1 analog output

**78) FE-SYMW**  
SIEMENS PLC SOFTWARE



- siemens microwin Step7 software

**79) FE-OP177**  
SIEMENS TOUCH SCREEN



- Siemens touch screen 5,7"
- greyscale, RS232 Port, 24 VDC

**80) FE-OP110**  
COLOUR TOUCH SCREEN



- colour touch screen 3,5"
- RS232 Port, 24 VDC

**81) FE-PPIU**  
SIEMENS USB PROGRAMMING CABLE



- USB-PPI programming cable

**82) FE-RM4**  
RELAY MODUL



- 4 relay with manual control and led
- 3 inverse contact for each

**83) FE-BM4**  
PUSH BUTTON MODUL



- 2 pushbutton with spring return
- 2 pushbutton with detent
- all buttons have leds

**84) FE-SZRM**  
COUNTER AND TIMER MODUL



- digital timer and counter
- preset timer with time selection
- 1x3 digit display, 2 outputs.
- counter 2x4 digit display
- selectable input frequency

**85) FE-OKMV**  
PROPORTIONAL CONTROL  
MODUL



- 0-10 VDC output
- supply voltage 24 VDC
- 2 seperate outputs

**86) FE-BP**  
MODUL CARRY CASE



- anodised aluminium case
- hinged covers to handle moduls

**87) FE-SES**  
SIEMENS PLC SET, SEPERATE  
USE



- reday to use plc set, S7-200, 222
- 8 digital input, 6 digital output
- PC/PPI programming cable
- microwin V4 software
- input simulator

**WORKSTATION**

**88) FM-M158D**  
MOBILE WORKSTATION



- table dimension 120cm x 70cm
- height is 190cm
- "T" slotted aluminium columns
- suitable for double side use
- with lockable 4 rollers
- include base to carry power unit and drawer

**89) FM-CG3**  
DRAWER



- drawer unit with 3 drawer
- 500 x 600 x 500mm

**AUXILIARY EQUIPMENTS**

**90) FP-KMP**  
AIR COMPRESSOR



- Silent air compressor
- Max pressure 8 bar
- 25 lt/min flow rate
- 20 liter tank volume
- electric motor 1/2 HP
- Power supply 220 VAC, 50/60 Hz

**91) FP-HKM**  
HOSE CUTTER



- 0-10mm hose diameter

**92) FP-PK**  
PNEUMATIC  
ELECTROPNEUMATIC BOOK



- basics and advanced level of pneumatics and electropneumatics
- cut-away pictures
- diagrams
- symbols

**93) FP-EPK**  
PNEUMATIC EPNEUMATIC  
EXERCISE BOOK



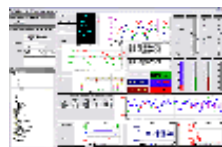
- exercise book for students
- pneumatics and electropneumatics

**94) FE-PCMC**  
DAQ - PC Measurement and  
Control Kit



- 250kHz sampling rate
- 16 analog In, 12 Bit,  $\pm 10V$ , 20 kHz
- 2 analog out, 12 Bit,  $\pm 5V$
- 4 digital In, 4 digital Out
- 1 Digital 16 Bit counter
- USB connection

**95) FE-PCMCS**  
DAQ - PC Measurement and  
Control SOFTWARE



- Control Software for Windows
- Mac OSX, Linux, Connector Board

**96) FE-DM**  
DIGITAL MULTIMETER



- digital multimeter for voltage
- current, resistance measurement
- diode test, continuity test

**97) FE-OS10**  
OSSILSCOPE



- oscilloscope 2 channel with trigger
- 20 Mhz, 0.2  $\mu s/cm$ -0.2s/cm time
- slot pattern, 5mV/cm-5V/cm grid
- amplitude

**98) FE-FG**  
FUNCTION GENERATOR



- function generator; sinusoidal,
- square, triangular, TTL Siglans;
- 0.1-500 kHz, 0-30V Output
- -15 - +15V offset