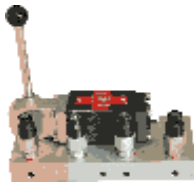
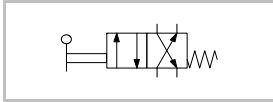


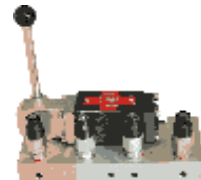
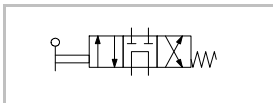
HYDRAULIC EQUIPMENTS

- 1 FH-42MV**
4/2 WAY MANUAL VALVE



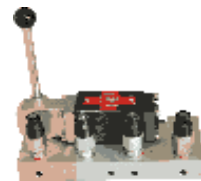
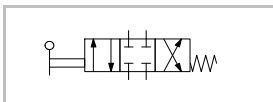
- hand operated manual valve
- max. pressure 120 bar
- flow rate 30 lt/min
- dimension NG4

- 2 FH-43MAM**
4/3 WAY MANUAL VALVE MID POSITION OPEN



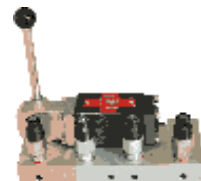
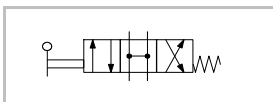
- hand operated manual valve
- max. pressure 120 bar
- flow rate 30 lt/min
- dimension NG4

- 3 FH-43MKM**
4/3 WAY MANUAL VALVE MID POSITION CLOSED



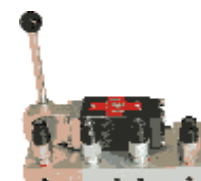
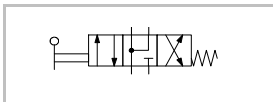
- hand operated manual valve
- max. pressure 120 bar
- flow rate 30 lt/min
- dimension NG4

- 4 FH-43MHM**
4/3 WAY MANUAL VALVE "H" CENTER



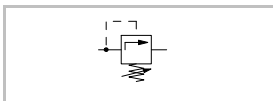
- hand operated manual valve
- max. pressure 120 bar
- flow rate 30 lt/min
- dimension NG4

- 5 FH-43MYM**
4/3 WAY MANUAL VALVE "Y" CENTER



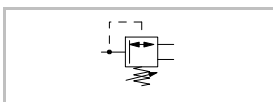
- hand operated manual valve
- max. pressure 120 bar
- flow rate 30 lt/min
- dimension NG4

- 6 FH-BSS**
PRESSURE SEQUENCE VALVE



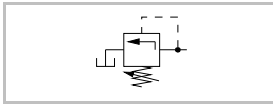
- max. pressure 120 bar
- flow rate 20 lt/min
- dimension NG4

- 7 FH-BD3Y**
3 WAY PRESSURE REDUCING VALVE



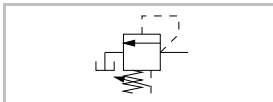
- max. pressure 120 bar
- flow rate 20 lt/min
- dimension NG4

8) FH-BEV
PRESSURE RELIEF VALVE



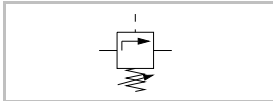
- max. pressure 120 bar
- flow rate 30 lt/min
- dimension NG4

9) FH-BEP
PILOTED PRESSURE RELIEF VALVE



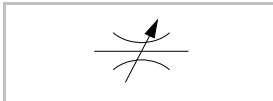
- max. pressure 120 bar
- flow rate 30 lt/min
- dimension NG4

10) FH-KDV
COUNTER BALANCE VALVE



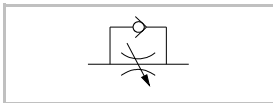
- max. pressure 120 bar
- flow rate 30 lt/min
- dimension NG4

11) FH-CYK
TWO WAY FLOW CONTROL VALVE



- manual operated valve
- max. pressure 120 bar
- flow rate 10 lt/min

12) FH-TYK
ONE WAY FLOW CONTROL VALVE



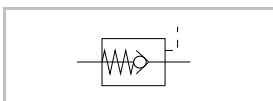
- manual operated valve
- max. pressure 120 bar
- flow rate 10 lt/min

13) FH-CV
NON RETURN VALVE



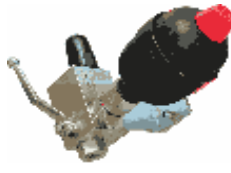
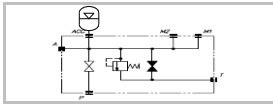
- hydraulic operated valve
- max. pressure 120 bar
- flow rate 15 lt/min
- opening pressure 5 bar

14) FH-CVDP
NON RETURN VALVE WITH PILOT OPEN



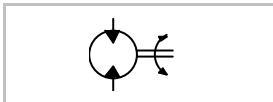
- hydraulic operated valve
- max. pressure 120 bar
- flow rate 15 lt/min

15) FH-EBDA
DIAPHRAGM ACCUMULATOR
WITH SAFETY BLOCK



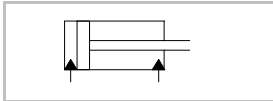
- nitrogen filled accumulator block
- max. pressure 120 bar
- flow rate 30 lt/min
- 0,35 lt gas volume

16) FH-HM2
HYDROMOTOR BIDIRECTIONAL



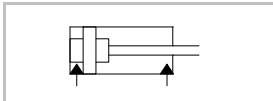
- hydraulic operated motor
- max. pressure 120 bar
- 12,9 cc/rev, flow rate 20 lt/min
- bi-directional hydromotor

17) FH-S202
DOUBLE ACTING CYLINDER



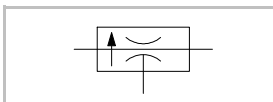
- hydraulic operated cylinder
- max. pressure 120 bar
- diameter 20mm
- strok 200mm

18) FH-S202Y
DOUBLE ACTING CYLINDER
WITH CUSHIONING



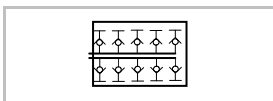
- hydraulic operated cylinder
- max. pressure 120 bar
- diameter 20mm
- strok 200mm
- with both end cushioning

19) FH-AKVP
FLOW CONTROL VALVE
PRESSURE COMPANSATED



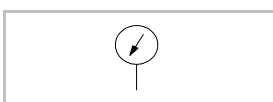
- hydraulic operated flow valve
- pressure compensated flow
- max. pressure 120 bar

20) FH-DB6
DISTRIBUTOR BLOCK, P,T



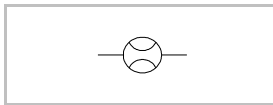
- manual operated couplings
- max. pressure 120 bar
- 3 P, 3 T station

21) FH-MT12
MANOMETER



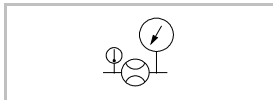
- 63mm diameter manometer
- 160 bar measuring range
- max. pressure 120 bar

22) FH-DB10
FLOWMETER



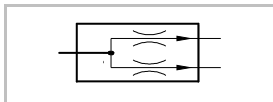
- 100 mm diameter flowmeter
- 0-6 lt/min measuring range
- max. pressure 120 bar
- operating pressure 100 bar

23) FH-BDS1
PRESSURE, FLOW,
TEMPERATURE INDICATOR



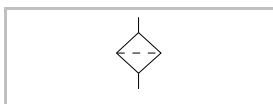
- 100 mm diameter flowmeter
- 63 mm diameter manometer
- 63 mm diameter temperature indicator
- 0-6 lt/min, 120 bar, 120 degree of celcius measuring range

24) FH-ABV
FLOW DIVIDER



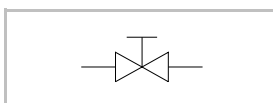
- hydraulic operated flow divider
- max. pressure 120 bar

25) FH-BF1
PRESSURE FILTER



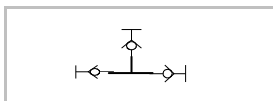
- hydraulic oil filter
- max. pressure 120 bar
- flow rate 35 lt/min
- filtering size 10 micron

26) FH-KV
SHUT-OFF VALVE



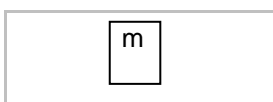
- manual operated valve
- max. pressure 120 bar
- shut-off valve

27) FH-TBR
T FITTING WITH QUICK
COUPLINGS



- tee branch
- quick couplings with check valve
- max. pressure 120 bar

28) FH-A10
WEIGHT



- mass, 10 Kg
- for cylinder use

- 29) FH-HH05**
HOSE WITH QUICK COUPLING





- 500mm hose with quick coupling
 - max. pressure 120 bar
- 30) FH-HH10**
HOSE WITH QUICK COUPLING





- 1.000mm hose with quick coupling
 - max. pressure 120 bar
- 31) FH-HH15**
HOSE WITH QUICK COUPLING





- 1.500mm hose with quick coupling
 - max. pressure 120 bar
- 32) FH-U312**
HYDRAULIC POWER UNIT





- 3 lt/min flow rate
 - pressure supply max.120 bar
 - 220 VAC, 0,37kW electric motor
 - tank capacity 20 liter
 - with On / Off button box
- 33) FH-BAP**
PRESSURE RELIEF PART



- to release residual pressure
- 34) FH-HA**
HOSE HOLDER



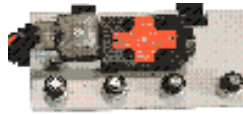
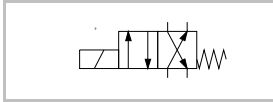
- hydraulic hose holder
 - up to 10 hose
- 35) FP-AP1070**
ALUMINIUM "T" SLOTTED PLATE



- 1.000mm x 700mm
 - T slotted aluminium anodised
 - suitable to use standart M8 nuts

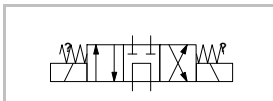
ELECTROHYDRAULIC EQUIPMENTS

36) FH-42SV
4/2 WAY SOLENOID VALVE



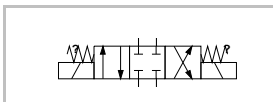
- solenoid operated valve
- max. pressure 120 bar
- flow rate 30 lt/min
- dimension NG4

37) FH-43SAM
4/3 WAY SOLENOID VALVE MID POSITION OPEN



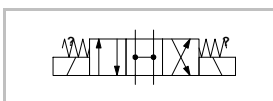
- solenoid operated valve
- max. pressure 120 bar
- flow rate 30 lt/min
- dimension NG4

38) FH-43SKM
4/3 WAY SOLENOID VALVE MID POSITION CLOSED



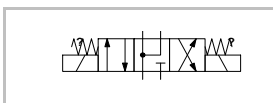
- solenoid operated valve
- max. pressure 120 bar
- flow rate 30 lt/min
- dimension NG4

39) FH-43SHM
4/3 WAY SOLENOID VALVE "H" CENTER



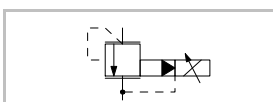
- solenoid operated valve
- max. pressure 120 bar
- flow rate 30 lt/min
- dimension NG4

40) FH-43SYM
4/3 WAY SOLENOID VALVE "Y" CENTER



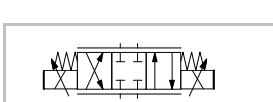
- solenoid operated valve
- max. pressure 120 bar
- flow rate 30 lt/min
- dimension NG4

41) FH-ORG1
PROPORTIONAL PRESSURE RELIEF VALVE



- proportional solenoid operated
- max. pressure 120 bar
- flow rate 16 lt/min
- dimension NG4

42) FH-53SOV1
4/3 WAY PROPORTIONAL VALVE



- max. pressure 120 bar
- flow rate 4 lt/min
- dimension NG4
- proportional solenoid operated

43) FH-BS
PRESSURE SWITCH




- max. pressure 120 bar
- measuring pressure 30-300 bar

44) FH-ABO
DIGITAL PRESSURE TRANSDUCER




- max. pressure 120 bar
- operating pressure 0-100 bar
- 0-10 VDC Output

45) FE-IS
INDUCTIVE SENSOR




- diameter M18, 24 VDC
- 4mm sensing distance
- metal detecting sensor

46) FE-KS
CAPASITIVE SENSOR




- diameter M18, 24 VDC
- 8mm sensing distance

47) FE-OS
OPTICAL SENSOR




- diameter M18, 24 VDC
- 50 mm sensing distance
- diffuse type
- potentiometer distance adjusting

48) FE-MSA
ELECTRICAL LIMIT SWITCH
BOTH SIDE ACTUATED




- mechanically actuated
- roller lever electrical switch
- both side actuation
- inverse contact

49) FE-KABS
CABLE SET




- different colour cable set
- isolated banana jacks
- 1,0m x 4 unit
- 0,50m x 8 unit
- 0,20m x 8 unit

50 FE-KA
CABLE HOLDER



- to hold electric cables

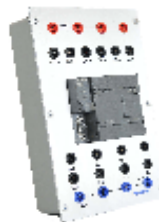
CONTROL MODULS

51 FE-GK
POWER SUPPLY



- supply voltage 220 VAC, 50/60 Hz
- switch off power supply
- 24 VDC, 2A, short circuit proof
- buzzer, led, emergency stop

52 FE-PL222
SIEMENS PLC



- Siemens S7-200, 222 PLC
- 8 digital input, 6 digital output

53 FE-PL224
SIEMENS PLC



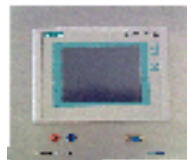
- Siemens S7-200, 224 xp PLC
- 14 digital input, 10 digital output
- 2 analog input, 1 analog output

54 FE-SYMW
SIEMENS PLC SOFTWARE



- siemens microwin Step7 software

55 FE-OP177
SIEMENS TOUCH SCREEN



- Siemens Touch Screen 5,7"
- Greyscale, RS232 Port, 24 VDC

56 FE-OP110
COLOUR TOUCH SCREEN



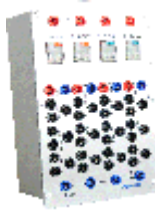
- colour touch screen 3,5"
- RS232 Port, 24 VDC

57) FE-PPIU
SIEMENS USB PROGRAMMING
CABLE



- USB-PPI programming cable

58) FE-RM4
RELAY MODUL



- 4 relay with manual control and led
- 3 inverse contact for each

59) FE-BM4
PUSH BUTTON MODUL



- 2 pushbutton with spring return
- 2 pushbutton with detent
- all buttons have leds

60) FE-SZRM
COUNTER AND TIMER MODUL



- digital timer and counter
- preset timer with time selection
- 1x3 digit display, 2 outputs.
- counter 2x4 digit display
- selectable input frequency

61) FE-OKMV
PROPORTIONAL CONTROL
MODUL



- 0-10 VDC output
- supply voltage 24 VDC
- 2 seperate outputs

62) FE-BP
MODUL CARRY CASE



- anodised aluminium case
- hinged covers to handle moduls

63) FE-SES
SIEMENS PLC SET, SEPERATE
USE



- redady to use plc set, S7-200, 222
- 8 digital input, 6 digital output
- PC/PPI programming cable
- microwin V4 software
- input simulator

WORKSTATION

64) FM-M158D
MOBILE WORKSTATION



- table dimension 120cm x 70cm
- height is 190cm
- "T" slotted aluminium columns
- suitable for double side use
- with lockable 4 rollers
- include base to carry power unit and drawer

65) FM-CG3
DRAWER



- drawer unit with 3 drawer
- 500 x 600 x 500mm

66) FH-YTT
OIL DRIP COLLECTOR



- collect drip oil

AUXILIARY EQUIPMENTS

67) FH-HK
HYDRAULIC
ELECTROHYDRAULIC BOOK



- basics and advanced level of hydraulics and electrohydraulics
- cut-away pictures
- diagrams
- symbols

68) FH-EHAK
HYDRAULIC ELECTROHYDRAULIC
EXERCISE BOOK



- exercise book for students

69) FE-PCMC
DAQ - PC Measurement and
Control Kit



- 250kHz sampling rate
- 16 analog In, 12 Bit, $\pm 10V$, 20 kHz
- 2 analog out, 12 Bit, $\pm 5V$
- 4 digital In, 4 digital Out
- 1 Digital 16 Bit counter
- USB connection

70) FE-PCMCS
DAQ - PC Measurement and
Control SOFTWARE



- Control Software for Windows
- Mac OSX, Linux, Connector Board

(71) FE-DM
DIGITAL MULTIMETER



- digital multimeter for voltage
- current, resistance measurement
- diode test, continuity test

(72) FE-OS10
OSCILOSCOPE



- oscilloscope 2 channel with trigger
- 20 Mhz, 0.2 μ s/cm-0.2s/cm time
- slot pattern, 5mV/cm-5V/cm grid
- amplitude

(73) FE-FG
FUNCTION GENERATOR



- function generator; sinusoidal,
- square, triangular, TTL Signals;
- 0.1-500 kHz, 0-30V Output
- -15 - +15V offset